

Morning Report PNR1z

Management System:	HSE	File Name:	067_PNR1z_13.12.18_RMR	
Approver:	Senior Geoscientist	Version No:	1	
Reviewer:	Frac Manager	Date of Issue:	14 th December 2018	
Author:	Senior Frac Engineer	Proposed date of Review:	n/a	
Version	Section	Revision Information	Date	Reviser
0.1	All	Draft Publication	14/12/2018	Senior Frac Engineer

Documents are reviewed as per proposed review date, or sooner if a significant change to the operation has taken place, to ensure relevance to the systems and process that they define.

Summary

Overview of day's operations (midnight to midnight):

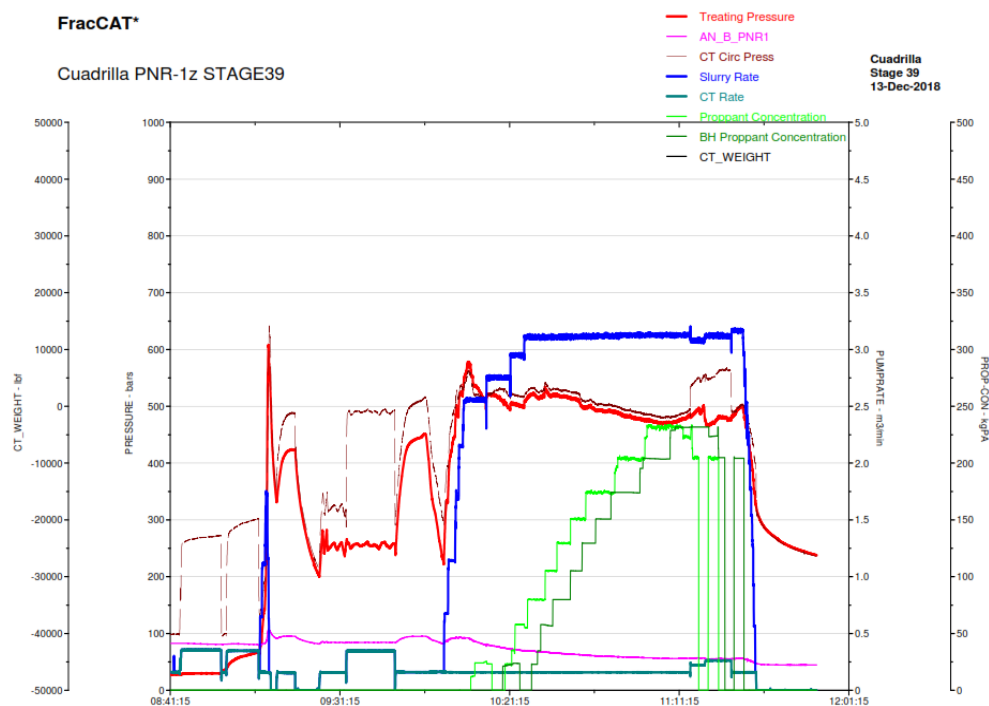
- Opened and proppant fractured sleeve 39. Flowed back well.
- Immediate post-frac flowback performed
- Induced seismicity: none
- No red line boundary breached

Injection Summary

Stage 39

Injection Depth m (RT)	Volume (fluid m ³ , proppant tonne)	Fluid System	Additives (type, mass kg, %)
-2699.6 m MDRT	Slickwater (261.2 m ³ & 27.2 T) 10% HCl (2.5 m ³)	Slickwater HCl	B528 Friction Reducer, Slickwater – 63.0 kg – 0.02%
-2344.5 m TVDRT			

Injection Chart

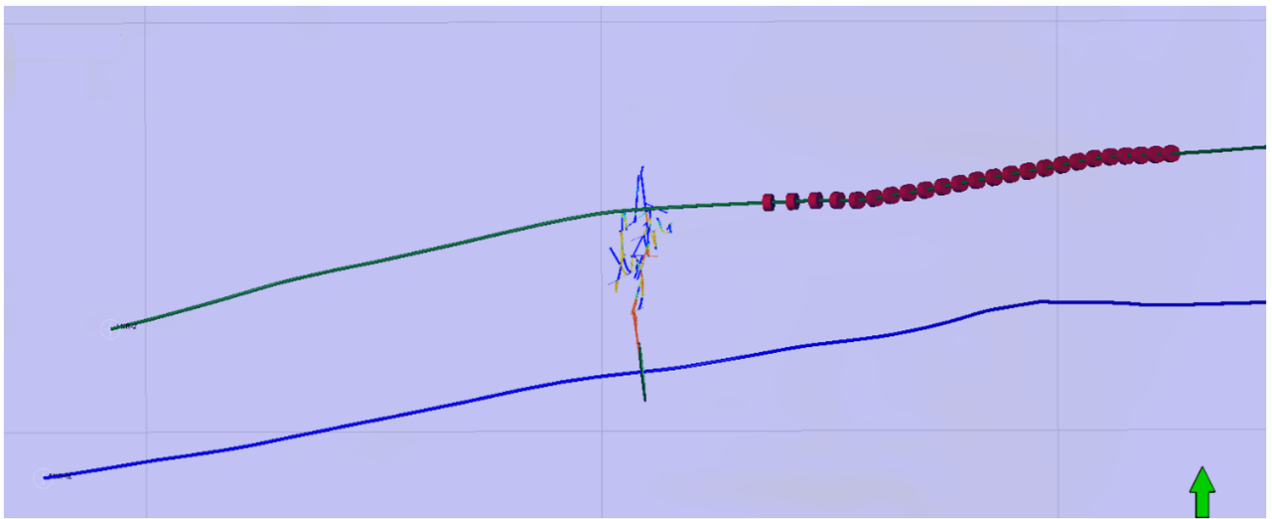


Pumping Time:

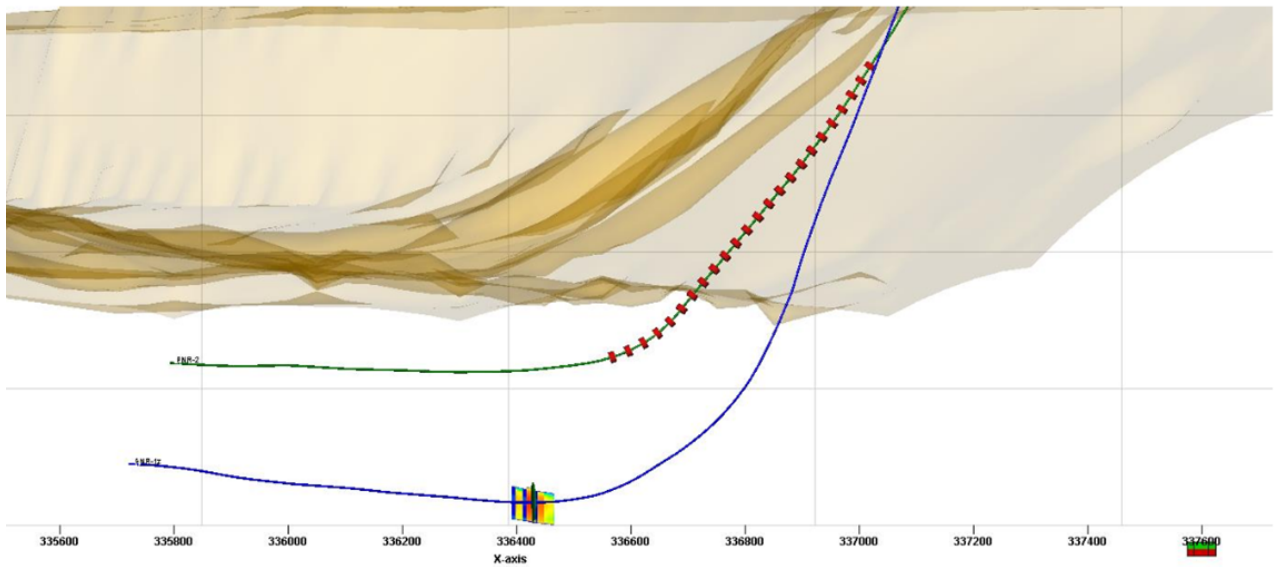
1) 13/12/2018 08:32:00 - 13/12/2018 11:34:00

PRIVATE & CONFIDENTIAL

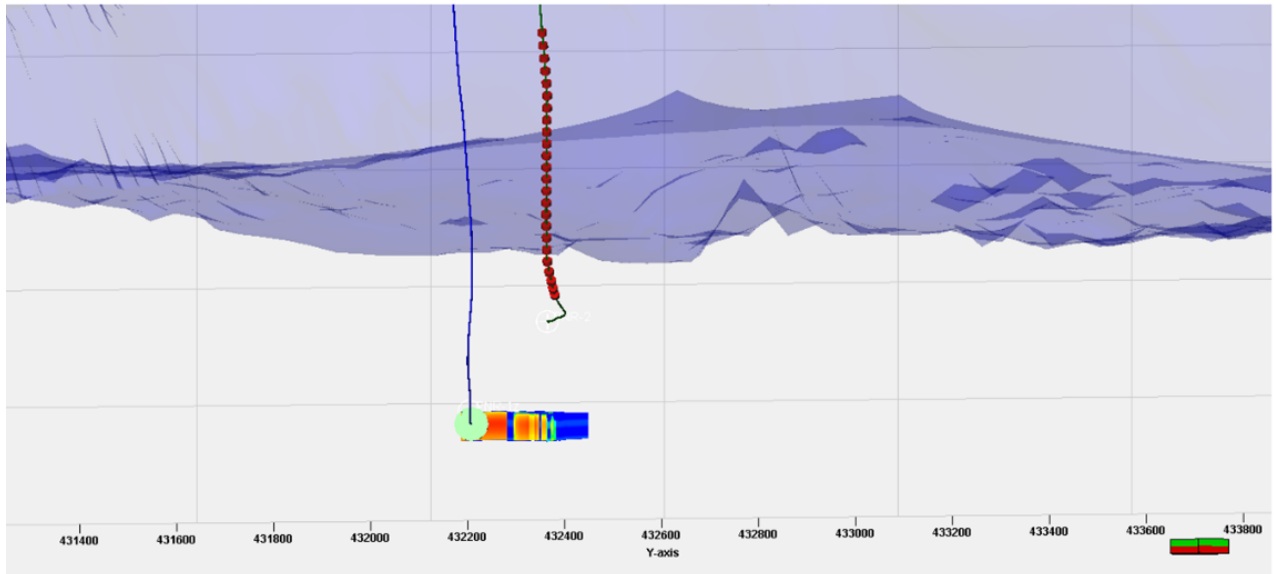
Fracture Growth



- Map View, scale north bar



- X-section due north



- X-section due east
- Max hydraulic frac half length: 128.3 m
- Hydraulic frac height at well: 60.2 m

Well Integrity Status

- No change

Seismicity of Note

- None

Update to Stress Magnitude

- No update to stress magnitude as closure was not observed
- $S_{Hmin} = 0.0148 \text{ MPa/m}$