

# Beatrice Boat Landing - Decom success story



Oil & Gas Authority



## Achievement

Boat landings have been successfully installed on 3 Beatrice facilities to provide the primary means of access.

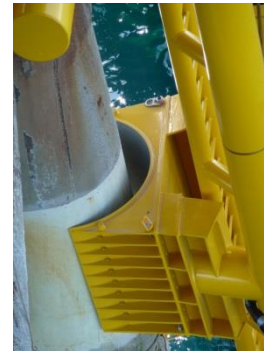
- Boat landing access is used extensively in the offshore wind power industry.
- They were safely installed with multiple interfaces requiring good communication (including Repsol Sinopec's Decom Project Team, Well P&A Team, Marine Operations Dept., Duty Holder)
- The work was executed simultaneously with well abandonment operations
  - executed safely in the splash zone within the constraints of coincident tide, wind, and daylight
  - executed without platform cranes, using winch lifts off supply vessels and cross hauling into position using air hoists



## OGA Decom Team comments

A good example by Repsol Sinopec of cross-industry learning and collaboration resulting in significant post-CoP cost savings

- A system with wider potential, for use by operators during the production phase too



## Key facts

The boat landing approach has a number of key benefits

- Risk reduction – Lower number of helicopter take-offs and landings
- Reduction in Abandonment Support Costs during Not Normally Attended (NNA) phase
  - 75% reduction in logistics costs associated with transport to facilities
  - Reduced maintenance of helideck facilities
- Flexibility to access the facilities to eliminate dependency on airframes;
- Opportunity to utilise for future Well Abandonment campaign reducing logistics costs
- Opportunity to share vessels with Operators of the wind farms local to the Beatrice facilities

